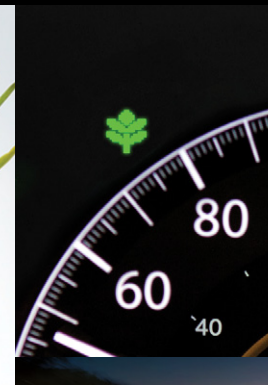
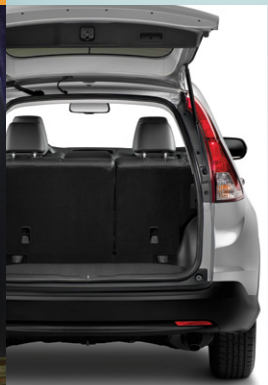




2012 CR-V



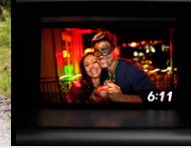
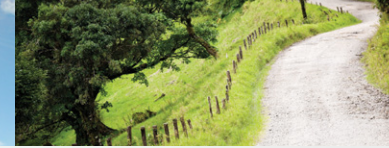


2012 CR-V



Yeah, it
does that.





Introducing the all-new redesigned 2012 Honda CR-V. From daily deeds to weekend trips to weeklong adventures, the new CR-V does nearly everything you want or need it to do. The style of big city sophistication? It has that. The fuel-economy of a powerful Honda i-VTEC® engine to get you far away from the city? It also has that. The versatile cargo space to handle everything from a trip to the store to a camping trek across the country? It was built for that.

Tech-savvy features that let you sync your smartphone with your CR-V? It has those, too. And how about a totally new approach to giving you even more driving control? That's what we call Real Time AWD™. We could go on, but you've got things to do. And whatever those things are, the new CR-V was designed to do, well, pretty much all of them.





A RE-MAKE WORTH SEEING.

The first thing you'll notice about the 2012 CR-V is the resculpted form. At first sight, it doesn't just turn your head, it radiates sophistication and strength with its modern curves and dynamic front grille. It's sleeker on the outside, roomier and more versatile on the inside. So now you can glide your way through city gridlock or pack in every last piece of camping gear. And because it was built for going places, there's a touch of luxury and a ton of space in the interior with available leather trimmed seats. The available power adjustable driver's seat, heated seats and illuminated steering wheel-mounted controls make for the perfect mix of leisure and lavishness. Add to all that the newly introduced Touring trim with its standard chrome door handles, roof rails and navigation system, and the total package becomes even more total.



PREFERRED SEATING

Driver and passenger alike will take comfort in the standard heated seats and abundant leg, arm and headroom. The driver's seat with available 10-way power adjustment gives you total control so you can always make yourself feel comfortable.

FIRST CLASS FOR ALL

Sometimes it's the simple things in life that make the difference. That's why we took the time to ensure every inch of the interior has an exceptional fit, finish and feel. We even reduced cabin noise so you can better hear yourself bragging to your passengers about it.

SWEET 17

The CR-V has style from the bottom up, thanks to the available 17-inch alloy wheels. Whether you keep them polished and shiny or covered in mud, they're a solid foundation to start any journey.

GO ON TOUR

The all-new Touring trim level takes the CR-V's sophisticated new design and adds even more stylish features. Chrome door handles, roof rails, auto-dimming rearview mirror, SiriusXM® Canada Satellite Radio and Honda Satellite-Linked Navigation System™ with bilingual Voice Recognition all come standard. All of these features combine to make for great drive after great drive.



2012 CR-V



BUILT FOR MAKING MULTIPLE CHOICES.

The new CR-V was built for multi-tasking. Go from picking up groceries to picking up a group of friends with a quick touch of the easy fold-down 60/40 split rear seatback. Or take advantage of the extensive cargo space by loading up for a journey with no set return date. You can even get things done without taking your hands off the wheel: Bluetooth® HandsFreeLink™ lets you stay in touch with family and friends. Whether you're going from A to B, or from city to country, the CR-V is an "all of the above" type of vehicle.

MAKE THE BACKSEAT DISAPPEAR

Go from legroom to mega room with the CR-V's easy fold-down 60/40 split rear seatback. Simply use the one-pull lever or strap, and each rear seat smoothly folds down so you're ready to take on any kind of load.

THE LOWEST YOU CAN GO

The CR-V has the lowest cargo floor in its class, so you can pack loads of stuff and still see out the rear window. Plus, it makes loading and unloading all your gear that much easier.

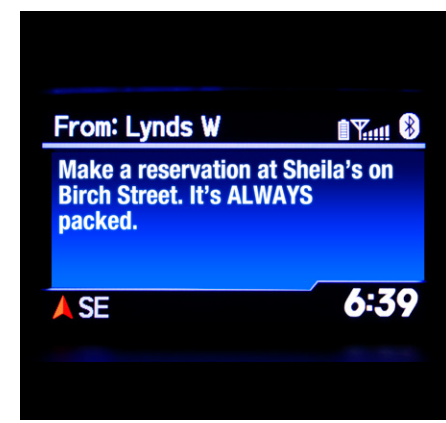
SPACED OUT

We wanted to give you room to move, without moving the CR-V up a size. The new design makes for easy entry and exit, so you can load packages, and people, of all shapes and sizes.

DON'T HOLD THE PHONE

How's hands-free for a handy feature? Standard on all CR-V trims, the Bluetooth® HandsFreeLink™ connects with your compatible smartphone so you can make or answer calls without taking your hands off the wheel. Plus, Bluetooth® Streaming Audio plays music from your compatible device wirelessly through the vehicle's audio system.





TECH, PLEASE.

It's about time the technology of what you drive caught up with the technology of everything else you do. The new CR-V is loaded with advanced features that let you get things done. But that's no excuse to take your hands off the wheel, so go ahead, make calls and receive text messages with the push of a wheel-mounted button. Get precise turn-by-turn directions from the i-MID with available navigation system. Stream music from your MP3 player. Personalize your own wallpaper on the i-MID. Watch your back with the multi-angle rearview camera. Or really pump up the volume with an available 7-speaker, 360-watt audio system. We've done a lot with the CR-V's technology so you can do a lot with your CR-V.

CENTRE YOUR ATTENTION

The i-MID (intelligent Multi-Information Display) is the centre from which all of the CR-V's technology flows. It's where you pick your tunes, check your rearview camera, see and customize vehicle info and settings, and view turn-by-turn directions, if equipped with available navigation system. You can even add your own wallpaper display.

U GOT TXTS

Standard on the CR-V is a convenient feature that lets you receive SMS text messages from your compatible smartphone. The i-MID screen notifies you of a new text. From there, you can choose to have the message read aloud, select from 6 preset replies, or call the sender.

LEAVE THE MAP AT HOME

The available Honda Satellite-Linked Navigation System™ with bilingual Voice Recognition is the future of finding your way. It can recognize numbers, street names and cities, along with 700 other commands. Turn-by-turn directions are displayed on the colour i-MID display and spoken over the audio system, making every trip easy and exciting.

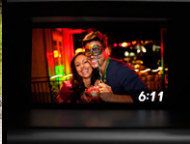
WE'VE GOT YOUR BACK

A multi-angle rearview camera comes standard, so you'll always be able to watch your back. Choose from three different views that are displayed on the i-MID screen or available navigation display, and use the guidelines to know when you're getting too close for comfort. Plus, the expanded view driver's mirror allows for more visibility.

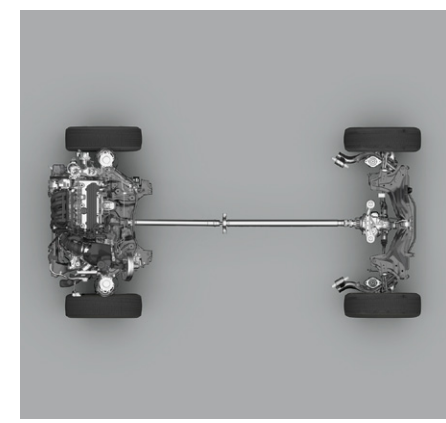
MUSIC TO EVERY EAR

The CR-V's available 360-watt AM/FM/CD 7-speaker audio system, including subwoofer, lets you make the most of your music. Available SiriusXM® Canada Satellite Radio, a USB audio interface and MP3 input jack mean there's a playlist for every passenger.



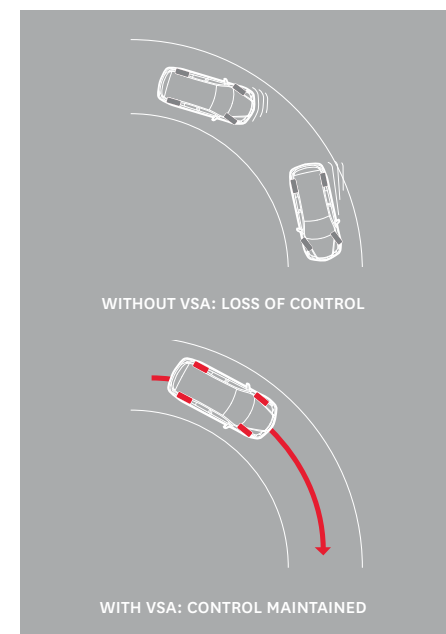


2012 CR-V



THERE'S SAFETY IN A NUMBER OF FEATURES.

The versatility of the new CR-V can be found from bumper to bumper, which is especially true when it comes to safety. It's a Honda, after all. The ability to go anywhere and do anything is nothing without the confidence that comes from high safety standards. Take the new Real Time AWD™ (Intelligent Control System™), for instance. It's a completely automatic feature that increases handling and control whether you're on dry road, in the rain, dashing through snow or tearing off-road on loose gravel. The system also supports high fuel efficiency and better all-around drivability. Then there's the added confidence of Hill Start Assist, which, if you can't tell by its name, automatically keeps your CR-V from rolling backwards when you're switching from brakes to gas on steeper hills. These innovative features are backed by the rest of the advanced standard safety equipment for which every Honda is known.



GRIP THE ROAD

For drivers who want the four-season confidence of all-wheel drive, the available Real Time AWD™ (Intelligent Control System™) debuts on the 2012 CR-V. It helps to give you traction in low-grip driving conditions such as snow, rain and unpaved road surfaces, and provides a faster, more intuitive initial response when a loss of traction is detected.

FULL OF SOFT AIR

The CR-V's cabin is lined with six standard airbags, including side curtain airbags with rollover sensor. The passenger-side Occupant Position Detection System (OPDS) airbag won't deploy if it detects a smaller-sized or out-of-position passenger.

INNER STRENGTH

Exclusive to Honda, the Advanced Compatibility Engineering™ (ACE™) body structure distributes frontal crash energy more evenly, increasing passenger protection.

CONTROLLED STOPS

The 4-wheel Anti-lock Braking System (ABS) helps you maintain control under hard braking conditions, while Electronic Brake Distribution (EBD) with Brake Assist helps to optimize braking power based on weight distribution inside the vehicle.

STEADY AS CR-V GOES

Vehicle Stability Assist (VSA®) senses and corrects oversteer and understeer situations to enhance handling and cornering stability, while Traction Control enhances grip during acceleration. And, new to the CR-V, Motion Adaptive Electric Power-Assisted Rack-and-Pinion Steering (EPS) provides an added level of control.





MAKE A CLEANER GETAWAY.

You've got a big to-do list. But with the new CR-V, stopping at the pumps won't be something you do as often. Not only is the powerful 2.4-litre, 16 valve i-VTEC® engine one of the most fuel efficient in its class, it now has the added benefit of the Ecological Drive Assist System™ (Eco Assist™) and ECON Button features. So now you literally can go the extra kilometre. And you'll be eager to take those longer journeys with the CR-V's smooth handling and solid ride. Wherever you're going and whatever you're doing, the CR-V does it all, with less.

THE LEAST IT CAN DO

One of the many reasons the CR-V is up for more adventures is because it runs on less gas. It's one of the most fuel-efficient vehicles in its class, with fuel economy as low as 6.6 litres per 100 km (Hwy.) using regular fuel. So you don't have to think twice before embarking on that last minute trip.

PERFORMANCE ENHANCEMENT

The CR-V's exceptional fuel economy isn't achieved at the expense of legendary Honda reliability and performance. Lying quietly beneath the hood is the 2.4-litre 16-valve, i-VTEC® 4-cylinder engine with 185 horsepower, making for the perfect balancing act of efficiency and power.

IT'S GOT A BIT OF A GREEN STREAK

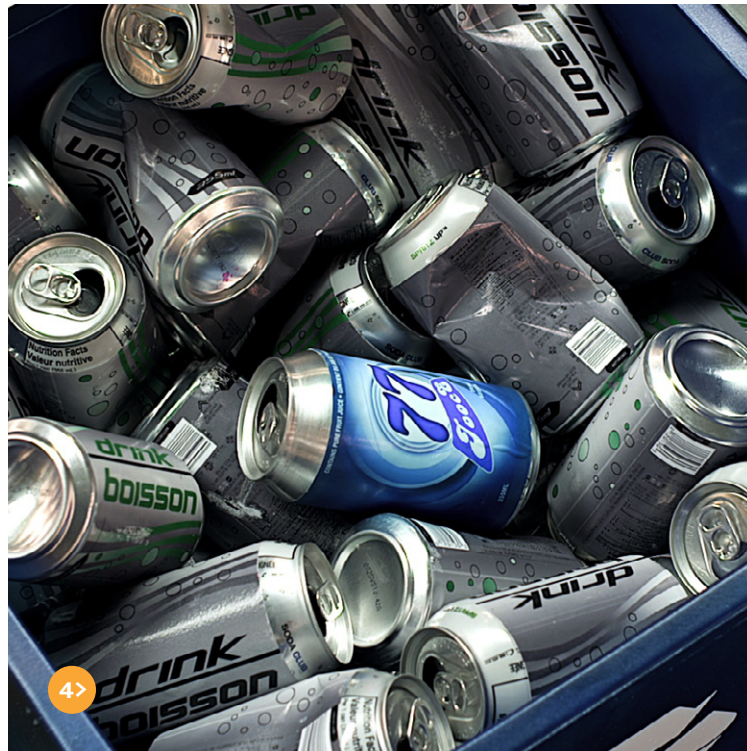
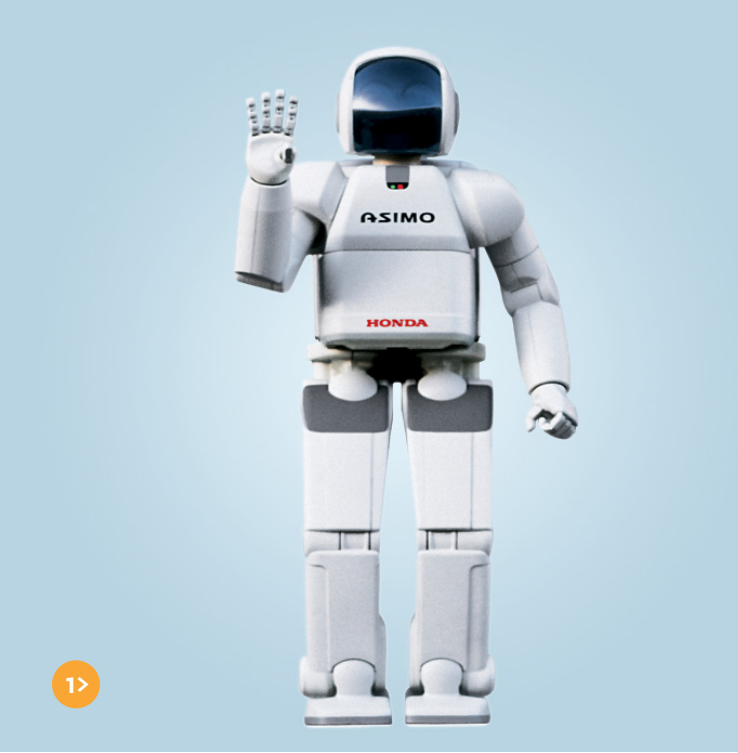
Standard on the CR-V are two features to help make you better friends with the environment, Eco Assist™ and the ECON button. Eco Assist has illuminated arcs on the dash that indicate how efficiently you're driving. Or with the push of a button, go into ECON mode, which helps enhance the fuel efficiency of the CR-V by automatically adjusting the engine and non-essential functions.

TAKE YOUR TURNS

We figured you'd probably be driving your CR-V quite a lot, so we might as well make it fun to drive, like every Honda. Enjoy car-like handling and maneuverability with the MacPherson strut front and multi-link rear suspensions, while taking advantage of the advanced electronics of the Drive-By-Wire Throttle System™ for heightened response between pedal and engine.



Eco Assist™ coaches you to drive more efficiently by changing the coloured arcs on either side of the speedometer.



THE POWER OF DREAMS, IN ALL THEIR FORMS. At Honda, we're committed to being a leader in innovative thinking, from the design of our vehicles to the way we work. We have a proud tradition of turning ideas into products and initiatives that help make the world around us a bit brighter and a little more fun. We continually strive to do things others think can't be done, because true innovation comes from daring to dream. Here are just some of the technically ingenious things Honda has brought to life through The Power of Dreams.

- 1> ASIMO™, THE ADVANCED LIFE-ASSISTING ROBOT
- 2> INNOVATIVE PRODUCTS LIKE THE HONDAJET
- 3> OVER 5.3 MILLION VEHICLES ASSEMBLED AT OUR CANADIAN MANUFACTURING FACILITIES
- 4> 10 NORTH AMERICAN HONDA PLANTS ARE SENDING ZERO WASTE TO LANDFILL
- 5> 2,736 TREES SPARED IN CANADA BY PRODUCING DIGITAL BROCHURES

- 6> BLUE SKIES FOR OUR CHILDREN IS HONDA'S ENVIRONMENTAL VISION FOR CANADA AND BEYOND
- 7> 25 YEARS PRODUCING HONDA VEHICLES AT OUR PLANT IN ALLISTON, ONTARIO
- 8> THE HONDA HEAD OFFICE IN MARKHAM, ONTARIO IS CERTIFIED LEED GOLD



CR-V TOURING

ENGINE	LX	EX	EX-L	TOURING
2.4-litre, 16-valve, DOHC, i-VTEC® in-line 4-cylinder	•	•	•	•
Horsepower @ rpm*	185 @ 7000	185 @ 7000	185 @ 7000	185 @ 7000
Torque (lb.-ft. @ rpm)*	163 @ 4400	163 @ 4400	163 @ 4400	163 @ 4400
Displacement (cc)	2354	2354	2354	2354
Emissions rating	Tier 2 Bin 5	Tier 2 Bin 5	Tier 2 Bin 5	Tier 2 Bin 5
Bore and stroke (mm)	87 x 99	87 x 99	87 x 99	87 x 99
Compression ratio	10.0:1	10.0:1	10.0:1	10.0:1
Direct Ignition System with immobilizer	•	•	•	•
Multi-Point Programmed Fuel Injection system (PGM-FI®)	•	•	•	•
Ecological Drive Assist System™ (Eco Assist™)	•	•	•	•
Recommended fuel	Regular	Regular	Regular	Regular

*Horsepower and torque calculations reflect SAE net, Rev. 08/04, SAE J1349 procedures.

DRIVETRAIN	LX	EX	EX-L	TOURING
5-speed automatic transmission	•	•	•	•
Drive-by-Wire Throttle System™	•	•	•	•
Front-wheel drive (FWD)	•	•	•	•
Hill Start Assist	•	•	•	•
Instrument panel-mounted shifter	•	•	Leather-wrapped	Leather-wrapped
Real Time AWD™ (Intelligent Control System™)	Available	Available	•	•
Towing capacity (kg)†	680	680	680	680

†See your Owner's Manual for proper towing operation.

SAFETY	LX	EX	EX-L	TOURING
3-point height-adjustable front seat belts with front pretensioners	•	•	•	•
3-point rear seat belts	•	•	•	•
4-wheel Anti-lock Braking System (ABS) with Electronic Brake Distribution (EBD) and Brake Assist	•	•	•	•
Advanced Compatibility Engineering™ (ACE™) body structure	•	•	•	•
Childproof rear door locks	•	•	•	•
Dual-stage, multiple-threshold front airbags (SRS)	•	•	•	•
Front side airbags with passenger-side Occupant Position Detection System (OPDS)	•	•	•	•
Immobilizer Theft-Deterrent System	•	•	•	•
Lower Anchors and Tethers for Children (LATCH)	•	•	•	•
Security system	•	•	•	•
Side curtain airbags with rollover sensor	•	•	•	•
Tire Pressure Monitoring System (TPMS)	•	•	•	•
Vehicle Stability Assist (VSA®) with Traction Control	•	•	•	•

EXTERIOR	LX	EX	EX-L	TOURING
Door handles	Black	Body-coloured	Body-coloured	Chrome
Fog lights	•	•	•	•
Front and rear splash guards	•	•	•	•
Heated folding power side mirrors including expanded view driver's mirror	Black	Body-coloured	Body-coloured	Body-coloured
Heat-rejecting green-tinted glass	•	•	•	•
One-touch power moonroof with tilt feature	•	•	•	•
Rear privacy-tinted glass	•	•	•	•
Roof rails	•	•	•	•



CR-V TOURING

CHASSIS	LX	EX	EX-L	TOURING
16" styled steel wheels	•			
17" alloy wheels		•	•	•
All-season tires	P215/70 R16 100S	P225/65 R17 102T	P225/65 R17 102T	P225/65 R17 102T
Compact spare tire	•	•	•	•
MacPherson strut front suspension	•	•	•	•
Motion-Adaptive Electric Power-Assisted Rack-and-Pinion Steering (EPS)	•	•	•	•
Multi-link rear suspension	•	•	•	•
Stabilizer bars - front/rear (mm)	20/19	20/19	20/19	20/19
Steering wheel turns, lock-to-lock	3.16	3.16	3.16	3.16
Power-assisted, ventilated front disc/solid rear disc brakes	•	•	•	•
Unit-body construction	•	•	•	•

ENTERTAINMENT	LX	EX	EX-L	TOURING
160-watt AM/FM/CD audio system with MP3/Windows Media® Audio playback capability and 4 speakers	•			
160-watt AM/FM/CD audio system with MP3/Windows Media® Audio playback capability and 6 speakers		•		
360-watt AM/FM/CD Premium audio system with MP3/Windows Media® Audio playback capability and 7 speakers including subwoofer			•	•
Bluetooth® Streaming Audio	•	•	•	•
MP3/auxiliary input jack	•	•	•	•
Speed-sensitive Volume Control (SVC)	•	•	•	•
Steering wheel-mounted audio controls	•	•	•	•
USB device connector	•	•	•	•
SiriusXM® Canada Satellite Radio†			•	•

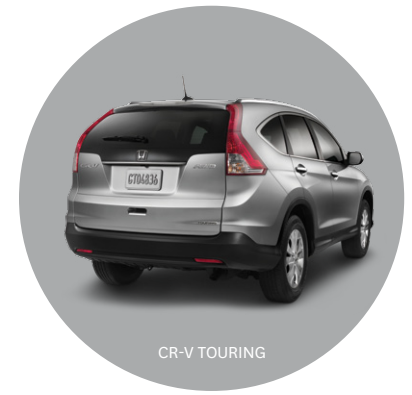
†Includes a no-charge trial of 3 months, beyond which service fees apply. Available in 10 Canadian provinces and 48 contiguous U.S. states. See terms and conditions at www.xmradio.ca or www.sirius.ca.

DIMENSIONS	LX	EX	EX-L	TOURING
Cargo volume - rear seats up/down (L)	1054/2007	1054/2007	1054/2007	1054/2007
Curb weight - FWD/Real Time AWD™ (kg)**	1499/1554	1526/1583	NA/1601	NA/1608
Fuel tank capacity (L)	58	58	58	58
Gross vehicle weight rating FWD/Real Time AWD™ (kg)	1965/2025	2025/2070	NA/2070	NA/2070
Ground clearance FWD/Real Time AWD™ (mm)	160/170	160/170	NA/170	NA/170
Headroom - front/rear (mm)	1013/980	964/980	964/980	964/980
Height FWD/Real Time AWD™ (mm)	1644/1654	1644/1654	NA/1654	NA/1654
Hip room - front/rear (mm)	1384/1349	1384/1349	1384/1349	1384/1349
Legroom - front/rear (mm)	1050/972	1050/972	1050/972	1050/972
Length (mm)	4530	4530	4530	4530
Passenger volume (L)	2949	2873	2873	2873
Shoulder room - front/rear (mm)	1489/1432	1489/1432	1489/1432	1489/1432
Track - front/rear (mm)	1562/1561	1565/1565	1565/1565	1565/1565
Wheelbase (mm)	2620	2620	2620	2620
Width (mm)	1820	1820	1820	1820

**Dimensions are for models without options.

FUEL ECONOMY* (L/100 KM)	LX	EX	EX-L	TOURING
Front-wheel drive (City/Hwy/Combined)	9.0/6.4/7.8	9.0/6.4/7.8		
Real Time AWD™ (City/Hwy/Combined)	9.2/6.6/8.1	9.2/6.6/8.1	9.2/6.6/8.1	9.2/6.6/8.1

*Fuel consumption for comparison purposes only and may vary with usage and accessories. See Dealer for latest EnerGuide results published by Natural Resources Canada (when available).



CR-V TOURING

COMFORT & CONVENIENCE

	LX	EX	EX-L	TOURING
12-volt power outlets – Front/centre console	•	•	•	•
Air conditioning with air-filtration system	•			
Dual-zone automatic climate control with air-filtration system		•	•	•
Auto-dimming rearview mirror				•
Auto-off headlights	•			
Auto on-off headlights		•	•	•
Average fuel consumption indicator	•	•	•	•
Beverage holders, front and rear (8)	•	•	•	•
Cargo area tie-down anchors (4)	•	•	•	•
Centre console	•	•	•	•
Compass	•	•	•	•
Conversation mirror with sunglasses holder	•	•	•	•
Digital trip meter	•	•	•	•
Door-pocket storage bins	•	•	•	•
Driver's and front passenger's seatback pockets		•	•	•
Driver's and front passenger's vanity mirrors	•	Illuminated	Illuminated	Illuminated
Exterior temperature indicator	•	•	•	•
Fold-down rear-seat centre armrest with integrated beverage holders	•	•	•	•
Foot-operated parking brake	•	•	•	•
HandsFreeLink™-bilingual Bluetooth® wireless mobile phone interface	•	•	•	•
Honda Satellite-Linked Navigation System™ with bilingual Voice Recognition				•
Illuminated cargo compartment	•	•	•	•
intelligent Multi-Information Display (i-MID)	•	•	•	•
Intermittent rear window wiper/washer	•	•	•	•
Intermittent windshield wipers	•			
Variable intermittent windshield wipers		•	•	•
Maintenance Minder system	•	•	•	•
Map lights	•	•	•	•
Multi-view rear camera† with onscreen display guidelines	•	•	•	•
Power door locks	•	•	•	•
Power windows with auto-up/down driver's window	•	•	•	•
Rear-seat heater ducts	•	•	•	•
Remote entry system	•	•	•	•
Remote fuel filler door release	•	•	•	•
Retractable cargo area cover		•	•	•
SMS text messaging	•	•	•	•
Steering wheel-mounted cruise control	•	•	•	•
Tilt and telescoping steering column	•	•	•	•

†Does not replace the driver's responsibility to exercise due care while reversing.

SEATING & TRIM

	LX	EX	EX-L	TOURING
Easy fold-down 60/40 split rear seatback	•	•	•	•
Driver's seat with manual height adjustment	•	•		
Driver's seat with 10-way power adjustment and power lumbar support			•	•
Heated front seats	•	•	•	•
Leather-trimmed seating surfaces			•	•
Leather-wrapped steering wheel			•	•
Seating capacity	5	5	5	5



CR-V LX

185-hp, 2.4-litre, 16-valve, DOHC, i-VTEC® 4-cylinder engine · 5-speed automatic transmission · 4-wheel Anti-lock Braking System (ABS) with Electronic Brake Distribution (EBD) and Brake Assist · 12-volt power outlets · 16" styled steel wheels · Easy fold-down 60/40 split rear seatback · 160-watt AM/FM/CD audio system with MP3/Windows Media® Audio playback capability and 4 speakers · Advanced Compatibility Engineering™ (ACE™) body structure · Air conditioning with air-filtration system · Available Real Time AWD™ (Intelligent Control System™) · Centre console · Compass · Drive-by-Wire Throttle System™ · Driver's seat with manual height adjustment · Dual-stage, multiple-threshold front airbags (SRS) · Ecological Drive Assist System™ (Eco Assist™) · Exterior temperature indicator · Front and rear splash guards · Front side airbags with passenger-side Occupant Position Detection System (OPDS) · HandsFreeLink™-bilingual Bluetooth® wireless mobile phone interface · Heated folding power side mirrors including expanded view driver's mirror · Heated front seats · Hill Start Assist · intelligent Multi-Information Display (i-MID) · Maintenance Minder system · Motion-Adaptive Electric Power-Assisted Rack-and-Pinion Steering (EPS) · Multi-angle rearview camera[‡] with guidelines · Power door locks · Power windows with auto-up/down driver's window · Rear privacy-tinted glass · Remote entry system · Side curtain airbags with rollover sensor · SMS text messaging · Steering wheel-mounted audio controls · Steering wheel-mounted cruise control · Tire Pressure Monitoring System (TPMS) · USB device connector · Vehicle Stability Assist (VSA®) with Traction Control

‡Does not replace the driver's responsibility to exercise due care while reversing.

CR-V EX

Adds to or replaces LX features:

160-watt AM/FM/CD audio system with MP3/Windows Media® Audio playback capability and 6 speakers · 17" alloy wheels · Automatic on-off headlights · Body-coloured door handles · Body-coloured heated folding power side mirrors including expanded view driver's mirror · Dual-zone automatic climate control with air-filtration system · Fog lights · One-touch power moonroof with tilt feature · Retractable cargo area cover · Security system · Variable intermittent windshield wipers

CR-V EX-L

Adds to or replaces EX features:

360-watt AM/FM/CD Premium audio system with MP3/Windows Media® Audio playback capability and 7 speakers including subwoofer · Driver's seat with 10-way power adjustment and power lumbar support · Leather-trimmed seating surfaces · Leather-wrapped steering wheel and instrument panel-mounted shifter · Real Time AWD™ (Intelligent Control System™) · SiriusXM® Canada Satellite Radio*

*Includes a no-charge trial of 3 months, beyond which service fees apply. Available in 10 Canadian provinces and 48 contiguous U.S. states. See terms and conditions at www.xmradio.ca or www.sirius.ca.

EXTERIOR / INTERIOR COLOURS

	LX	EX	EX-L	TOURING
Aspen White Pearl II			BL	BL
Alabaster Silver Metallic	BF	BF	BL	BL
Crystal Black Pearl	BF	BF / BeF*	BL / BeL	BL / BeL
Dark Cherry Pearl II	GF*	GF*	GL	GL
Opal Sage Metallic	GF	GF	GL	GL
Taffeta White	BF	BF		
Twilight Blue Metallic	GF*	GF* / BeF	GL / BeL	GL / BeL
Polished Metal Metallic	BF*	BF	BL	BL

*4WD model only.

CR-V TOURING

Adds to or replaces EX-L features:

Auto-dimming rearview mirror · Chrome door handles · Honda Satellite-Linked Navigation System™ with bilingual Voice Recognition · Roof rails

CR-V EXTERIOR COLOURS

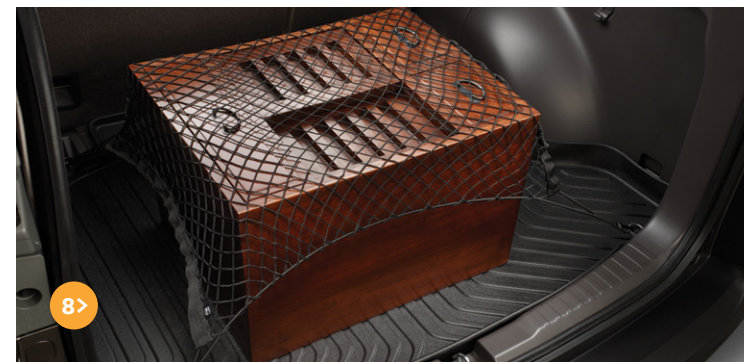
Aspen White Pearl II	Alabaster Silver Metallic
Crystal Black Pearl	Dark Cherry Pearl II
Opal Sage Metallic	Taffeta White
Twilight Blue Metallic	Polished Metal Metallic

CR-V INTERIOR COLOURS

Grey Fabric (GF)	Grey Leather (GL)
Black Fabric (BF-EX)	Black Leather (BL)
Black Fabric (BF-LX)	Grey Fabric (GF-LX)
Beige Leather (BeL)	Beige Fabric (BeF-EX)



CR-V TOURING



PACKAGES AND KITS

PROTECTION PACKAGE

- > All-weather floor mats
 - black
- > Cargo tray

REMOTE ENGINE STARTER PACKAGE

TOWING PACKAGE

UTILITY PACKAGE

- > Running boards
- > Roof rack cross bars and rails, if applicable

1> Air deflector

2> All season mats

3> Tailgate spoiler

4> Door visors

5> Cargo tray

6> Rear backup sensors

7> Roof cross bars

8> Cargo net

9> Trailer hitch

10> 17" alloy wheels

11> Moulding boards

12> Exhaust finisher



1>



3>



5>



7>



2>



4>



6>



8>

WHEN IT COMES TO ENGINEERING, WE DON'T KNOW WHEN TO STOP. There's a lot more to Honda than our reliable cars and trucks. As a company founded on dreams, it's no surprise you can find our innovative engineering in everything from motorcycles to ATVs to power equipment and Marine. For almost anything you need to do, there's a Honda that can help you get the job done.

- 1> Snowblowers
- 2> Generators
- 3> Marine
- 4> Lawn and Garden
- 5> ATVs
- 6> Off-Road
- 7> Side-by-Side
- 8> Motorcycles



WE'RE HERE. At Honda, assistance and support are always available. The team of trained technicians at your Honda dealership will keep your vehicle in terrific shape. Honda accessories installed at the time your vehicle is purchased are covered under the 3-year/ 60,000-km limited warranty. If you need more information or assistance, call us at 1-888-9-HONDA-9. For all of the latest Honda information, including product specifications, pricing, photos and more, visit honda.ca. It has everything you need to “design” your Honda and personalize it with items from a list of quality accessories.

Quality Honda Accessories give you the opportunity to fine-tune your new Honda just how you like it. Whether you want to turn up the style, the versatility or the exclusivity, every accessory is designed and built to adhere to the strictest Honda standards. See your dealer for full details.

Genuine Honda Replacement Parts are made to the same exacting standards as original Honda components and are guaranteed by the Genuine Honda Parts Warranty.

Honda Financial Services. Whether you buy or lease a Honda, Honda Financial Services can assist you with the process. Ask your dealer which lease or purchase plan best suits your needs.

We're ready to help. When you purchase a new Honda, you automatically receive Honda Plus Roadside Assistance. This service is available to you, or anyone else driving your vehicle, 24 hours a day, 7 days a week, anywhere in Canada or the continental U.S. Coverage is for 3 years, unlimited distance and includes towing, battery boosting and lockout assistance plus many other helpful services. Ask your dealer for more information.



Specifications, features, illustrations and equipment shown in this catalogue are based on the latest available information at the time of publication. Although descriptions are believed to be correct, accuracy cannot be guaranteed. Honda Canada Inc. reserves the right to make changes at any time, without notice or obligation, in colours, specifications, accessories, materials and models. Some vehicles are shown with optional equipment. Some vehicles shown are U.S. models. Canadian specifications may vary. Map Database of the Honda Satellite-Linked Navigation System covers major metropolitan areas in southern Canada and the 48 contiguous U.S. states. For a list of current detailed coverage areas, refer to the Honda web site, www.honda.ca. Bluetooth is a registered trademark of SIG Inc. HandsFreeLink is a trademark of Johnson Controls Technology. Windows Media is a registered trademark of Microsoft Corporation. SiriusXM Canada is a registered trademark of Canadian Satellite Radio Holdings Inc. Honda, CR-V, ACE, Advanced Compatibility Engineering, Drive-by-Wire Throttle System, Eco Assist, Ecological Drive Assist System, Honda Satellite-Linked Navigation System, i-Vtec, Intelligent Control System, PGM-FI and VSA are trademarks of Honda Motor Co., Ltd.